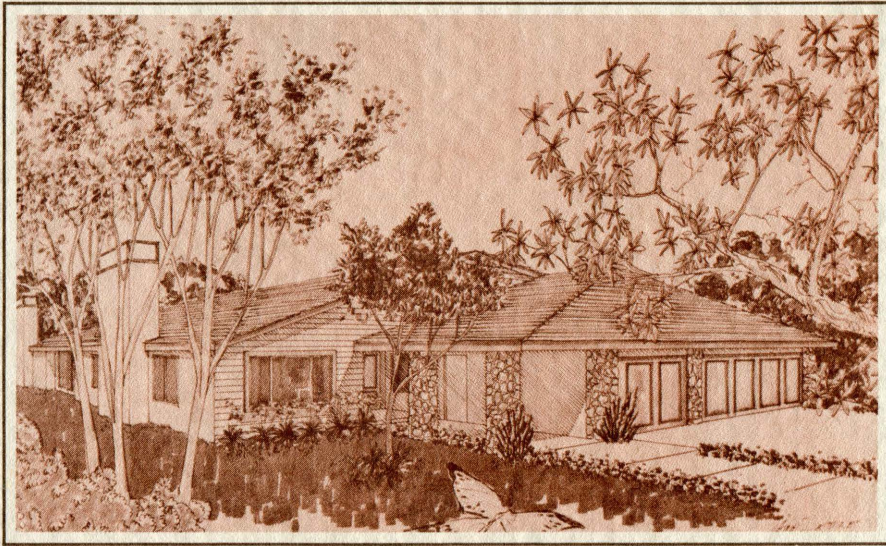


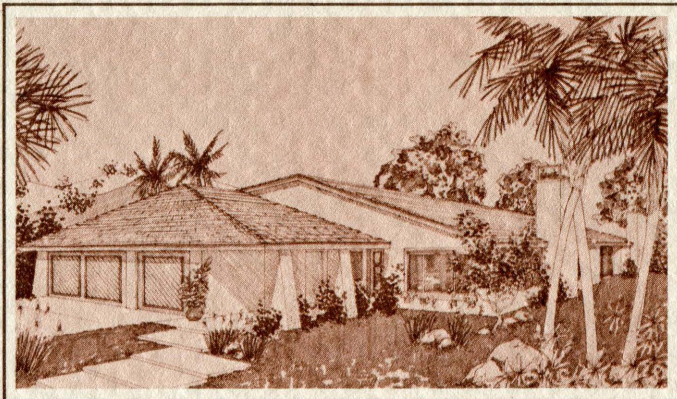
An exclusive community of exemplary homes...



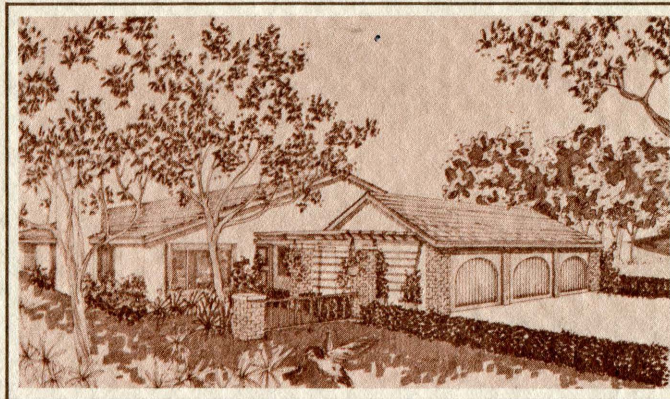
Elevation "A"



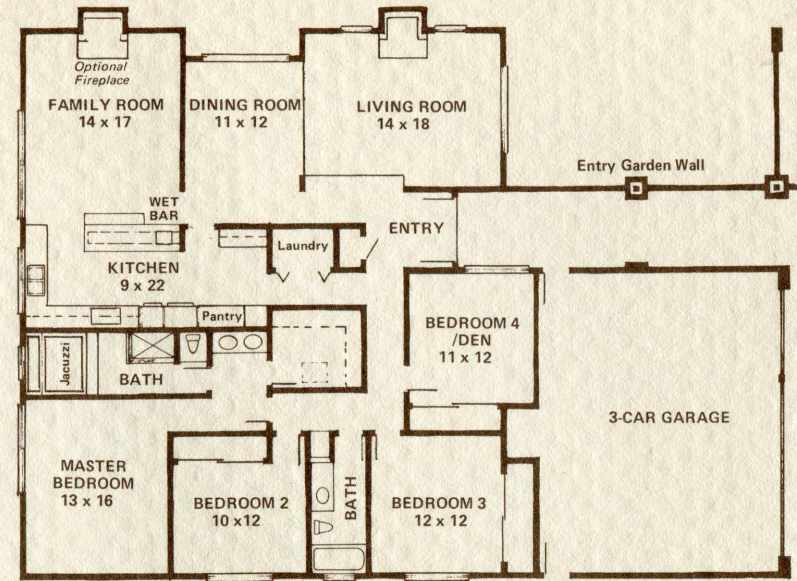
Elevation "D"



Elevation "C"



Elevation "B"

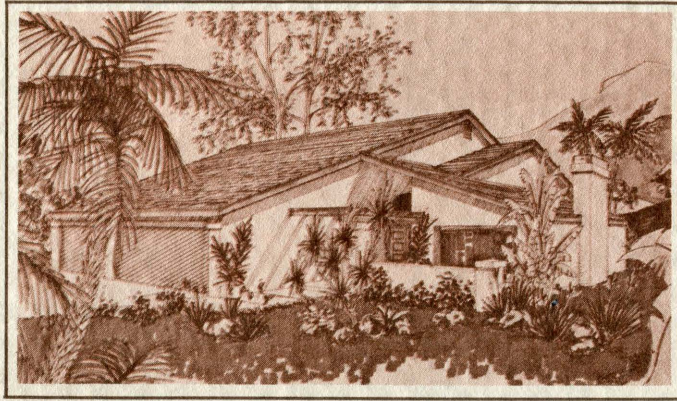


the Palomino

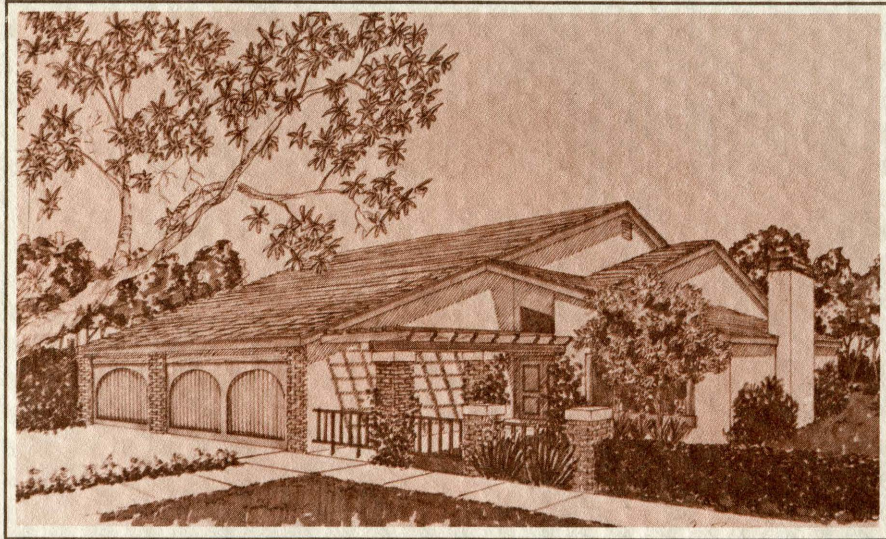
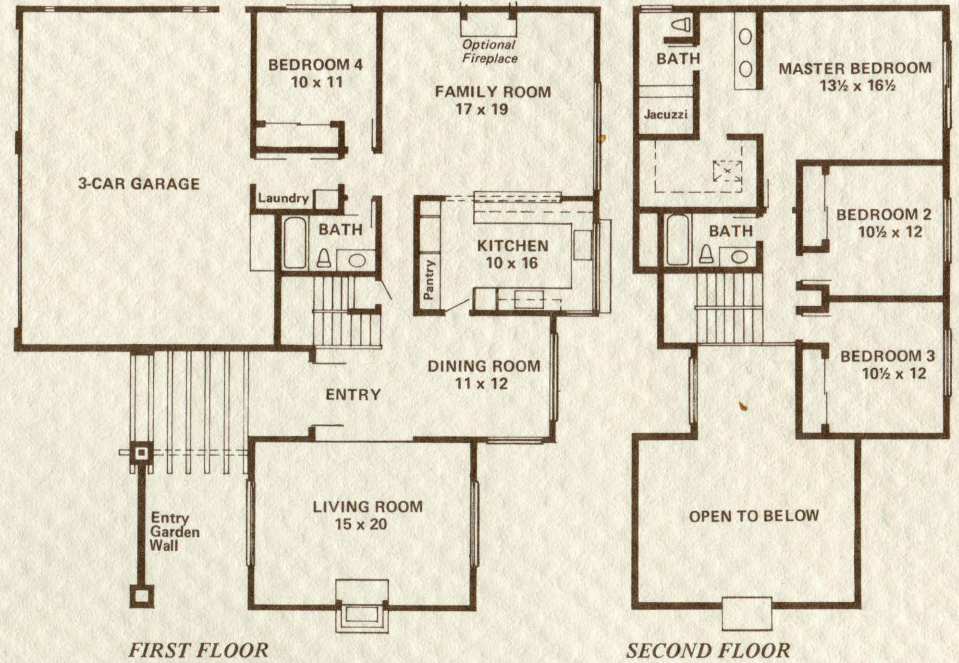
Plan 100

Perfectly designed floorplan allows convenient flow for entertaining, yet the bedrooms are separate for privacy. Note the exceptional Master Suite with health spa and separate shower.

- Single Story
- Four bedrooms (or three plus den)
- Two baths
- Formal dining
- Family room with wet bar



Elevation "A"

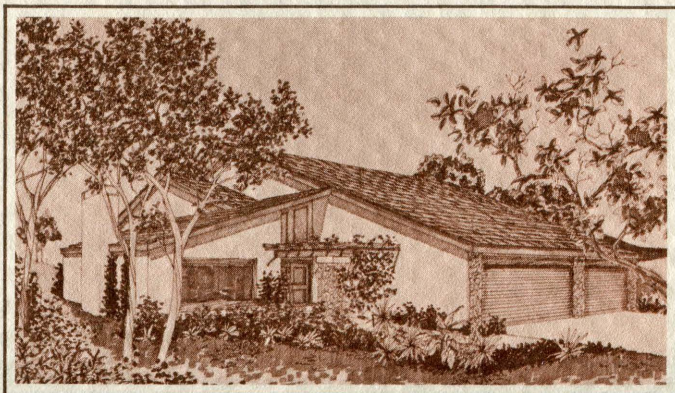


Elevation "B"

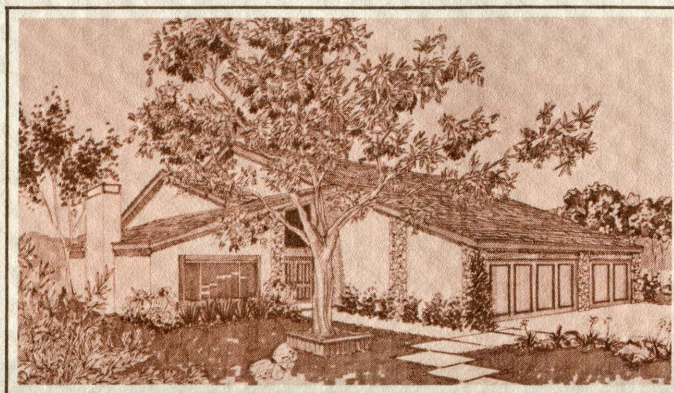


the Mustang
Plan 200

Two story elegance with a true formal living room. Fourth bedroom is ideally suited for a den or office. Secluded Master Suite with health spa and balcony.

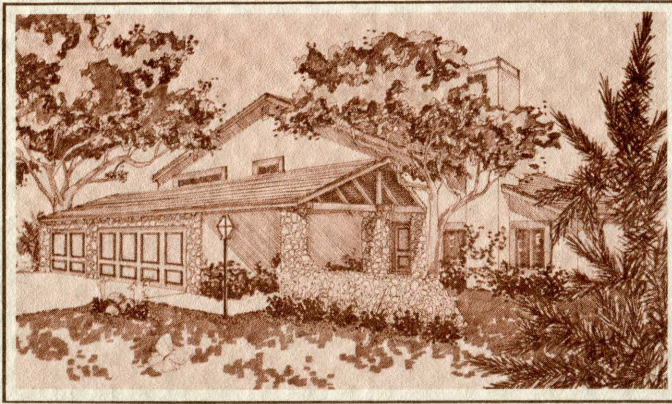


Elevation "D"

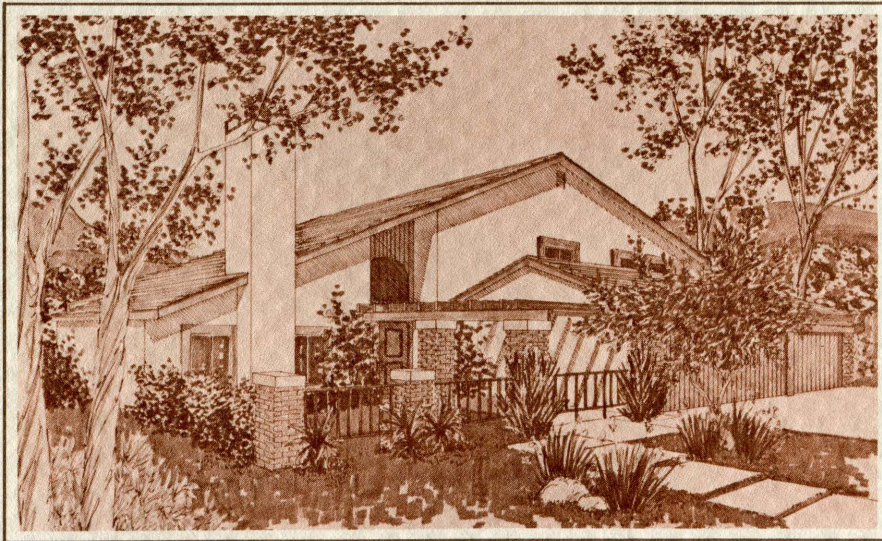


Elevation "C"

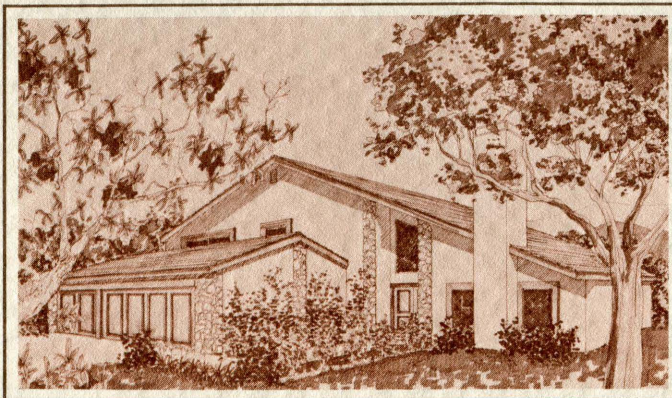
- Two Story
- Four bedrooms (or three plus den)
- Three baths
- Formal dining
- Family room



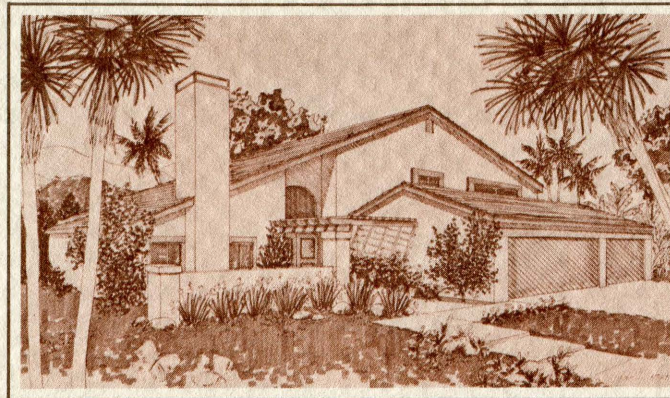
Elevation "D"



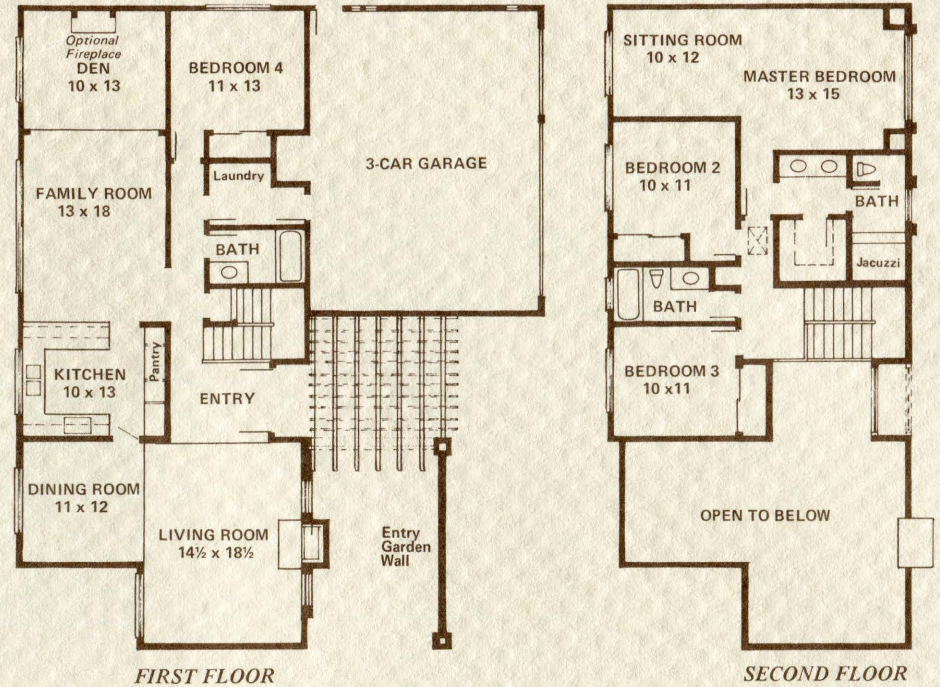
Elevation "B"



Elevation "C"



Elevation "A"



FIRST FLOOR

SECOND FLOOR

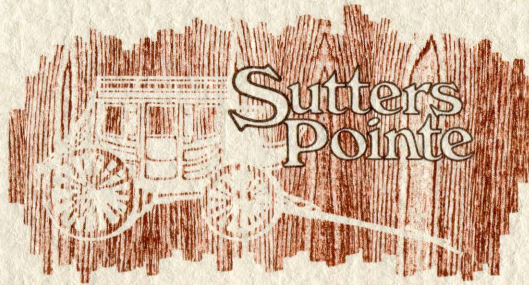


the Appaloosa

Plan 300

Designed in the grand manner combining convenience and spaciousness. Catering to the family with multi-needs, there is room to grow but a sophisticated air for entertaining.

- Two Story
- Four bedrooms
- Three baths
- Den
- Formal dining
- Family room



The essence of old world craftsmanship . . .

**Carefully planned
for the
truly discriminating,
custom amenities
include . . .**

LIVING AREA:

- 2400 - 2600 square feet
- Double door entries with decorator tile floor
- Cathedral ceiling, step-down living room
- Elegant formal dining room
- Living room features circulator air rock fireplace
- Plush nylon carpeting with choice of colors

OPTIONS:

- Second fireplace in master bedroom or family room
- Steam Bath in master suite

KITCHEN:

- General Electric appliances
- Microwave & self-cleaning ovens
- Dishwasher
- Choice of gas or electric cooktop
- Breakfast/bar
- Stained ash cabinet with "pull out" pantry
- Ceramic tile counters and Armstrong cushion linoleum floor
- Recessed lighting
- Ice maker hookup

BEDROOMS & BATHS:

- Four spacious bedrooms
- Plush nylon carpeting with choice of colors
- Two or three full baths
- Onyx pullmans
- Armstrong cushion linoleum
- Recessed lighting

MASTER SUITE:

- Complete health spa with jacuzzi tub
- Huge walk-in closet
- Double sinks & onyx pullman
- Separate dressing area

UTILITY & SERVICE AREAS:

- Three car garage with automatic door opener
- Convenient, in-house laundry area
- 4 & 5 ton air conditioning

EXTERIOR:

- ¼ acre pool size lots
- Concrete patios off kitchen & family room
- Tile & cedar roofs (depending on location)
- Seeded front lawn
- Sprinklers - front & rear with 2-phase time clock

A UNIQUE CONCEPT . . .

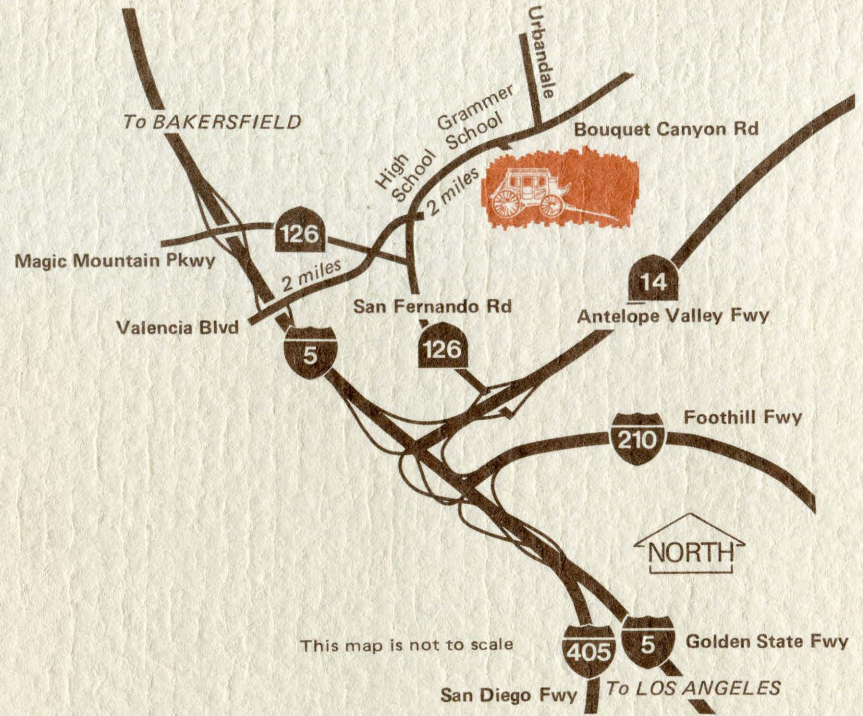
Homeowner's Association will maintain:

- Five night-lighted tennis courts - situated throughout the development
- Forty acres of green belts further enhancing the country atmosphere
- Dues of only \$10.50 per month (approximately)

**Nestled in the hills of Bouquet Canyon
away from the smog and congestion.
Quietly retreat to your own private world.**



Artist's Conception



Located on Bouquet Canyon at Urbandale.

Grammer School and High School
within walking distance.

(805) 251-3225

(213) 362-2660

