



LIFE



A CALIFORNIA CANDIDATE

NOVEMBER 7, 1938





The Honorable Governor Culbert Levy Olson

**“Past, Present and Future”
A Statesman Before His Time**

This day, the **The Honorable** *Olson*
Culbert Levy Olson

to **Governor of California** *Olson*

a Christmas card so I have chosen to
accompany the **1938-1942** *Olson*



The First Digital Exhibit for a California Governor



California
STATE LIBRARY

F O U N D E D 1 8 5 0

PRESERVING OUR HERITAGE, SHAPING OUR FUTURE

California Supreme Court Justice Stanley Mosk





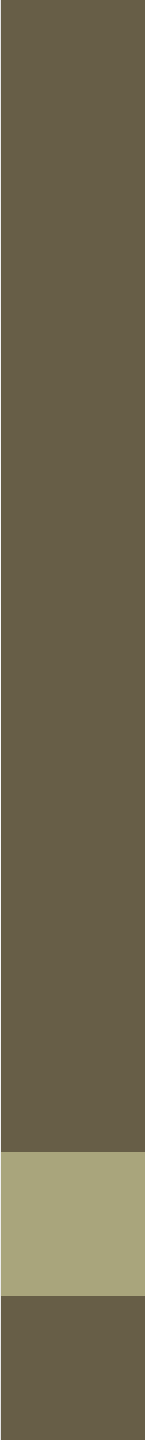
Family

Delilah King Olson and Her Children



Culbert Olson in his Early 20s





Kate Olson, Gracious Hostess

Mrs. Culbert L. Olson
requests the pleasure of your company
at tea
on Thursday afternoon, the twentieth of April
from three until four o'clock
Executive Mansion
Sacramento, California







The Olsons' 33rd Wedding Anniversary in 1938



The Campaign

Supporter of Upton Sinclair's "End Poverty in California" (EPIC)

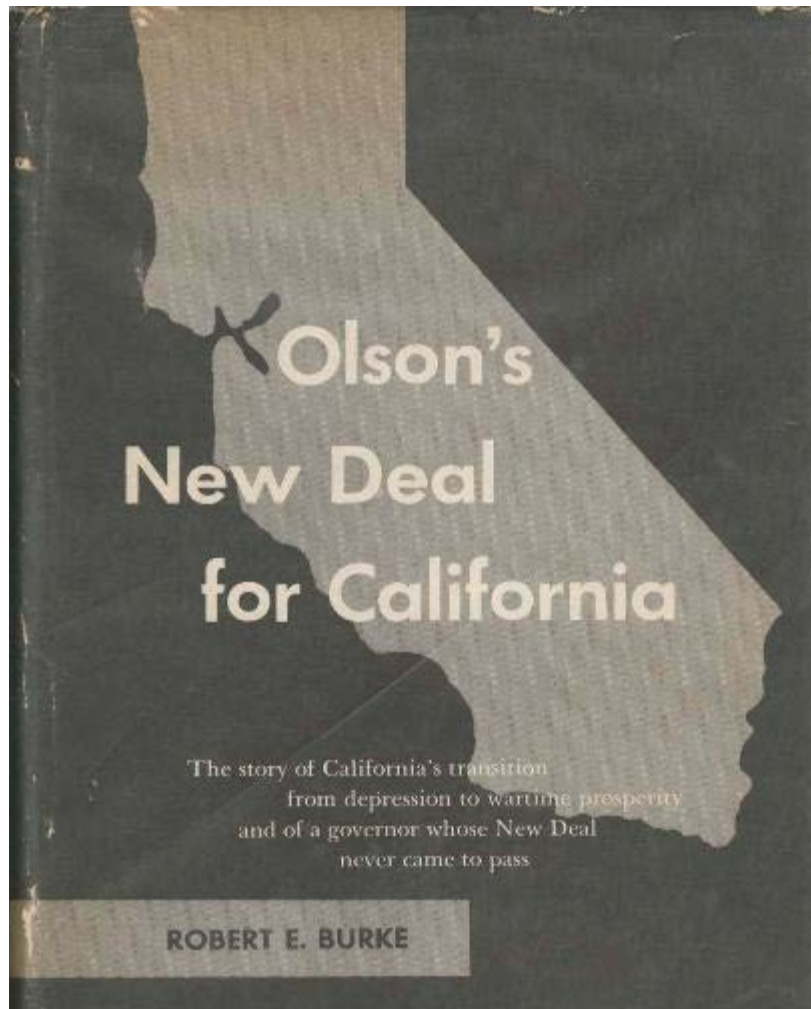


In 1934, Elected to California State Senate





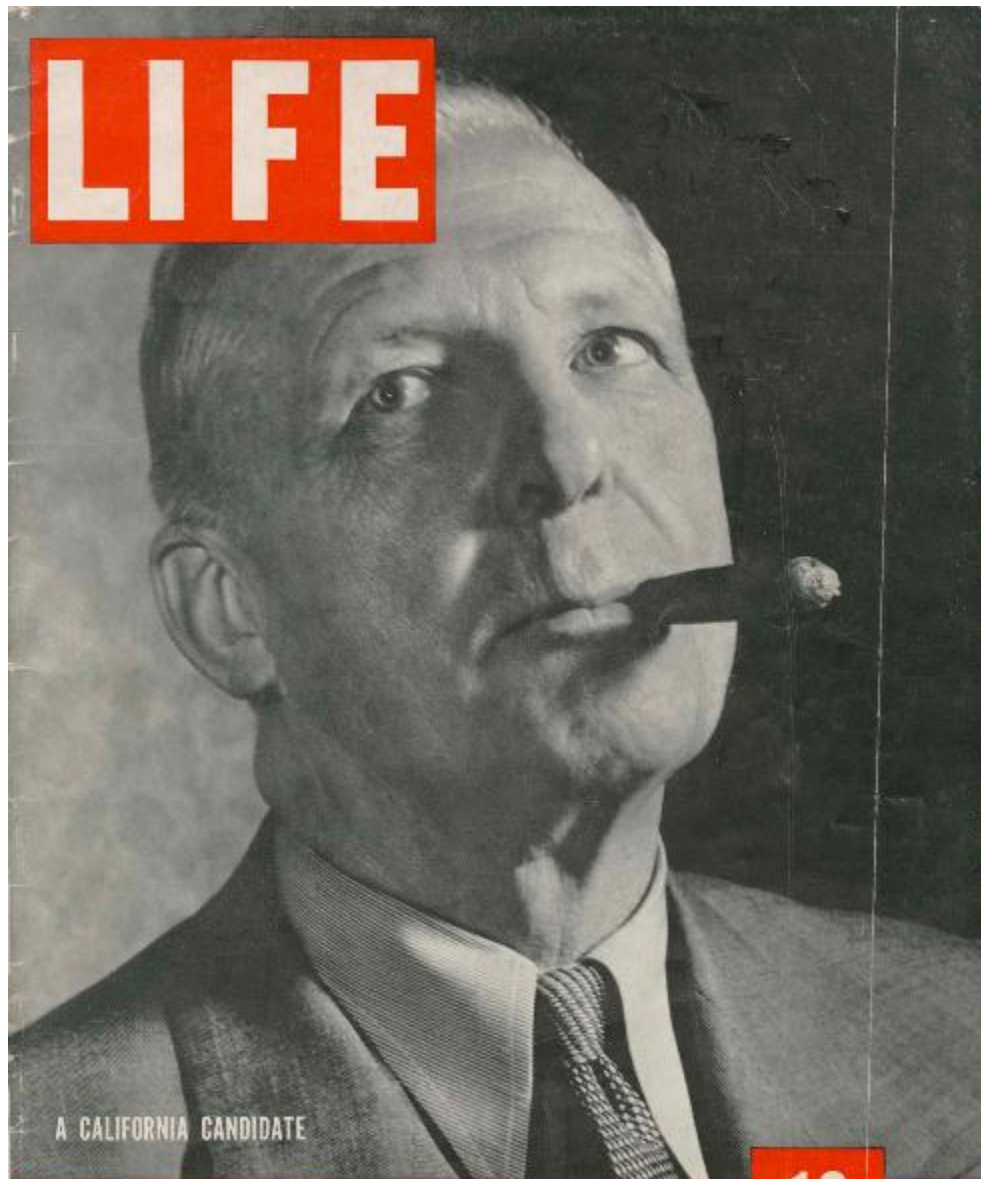
New Deal for California



Campaign Postcard 1938



LIFE



A CALIFORNIA CANDIDATE

NOVEMBER 7, 1938 **10** CENTS

W. H. RAYSON

The Olson's cast their ballots in Los Angeles November 8, 1938







Inaugural Address

“There is none among us who can doubt that the people have voted for a government that shall honestly place human values before material values; that they want a government that will do the human thing in a sound and workable way, unswerved by pressure from any self-seeking group or special interest.”

Governor Olson Sworn In



Three Days Later, He Conceded to Putting his Hand on the Bible.





Associated Press

GRAND BASH: *Gov. Culbert Olson and his wife, Kate Jeremy Olson, greet the 4,000 guests who attended his 1939 inaugural.*







Governorship

Governor's Mansion in Sacramento, 1939-1943



Culbert's Packard Limo, 1939





Gov. Olson's Dedication of the Golden Gate International Expo



Olson Pardoning Tom Mooney





Culbert Olson Started to Enact The Platform He Ran On

- Support for Labor and Unions
- Guaranteed Old Age Pensions
- Universal Healthcare
- Regulation of Public Utilities
- Separation of Church and State



Universal Healthcare for California presented in 1939

- “It is no longer seriously debated that a fundamental change is needed in the method of meeting the costs of medical care and the risks and loss of sickness, especially for wage earners and others of small or moderate income,” Olson, presenting the plan on April 13, 1939.

Ham & Eggs Pension Plan

NATIONAL
Ham and Eggs
LIFE PAYMENTS
\$30 A WEEK
for life
RETIREMENT ASSOCIATION

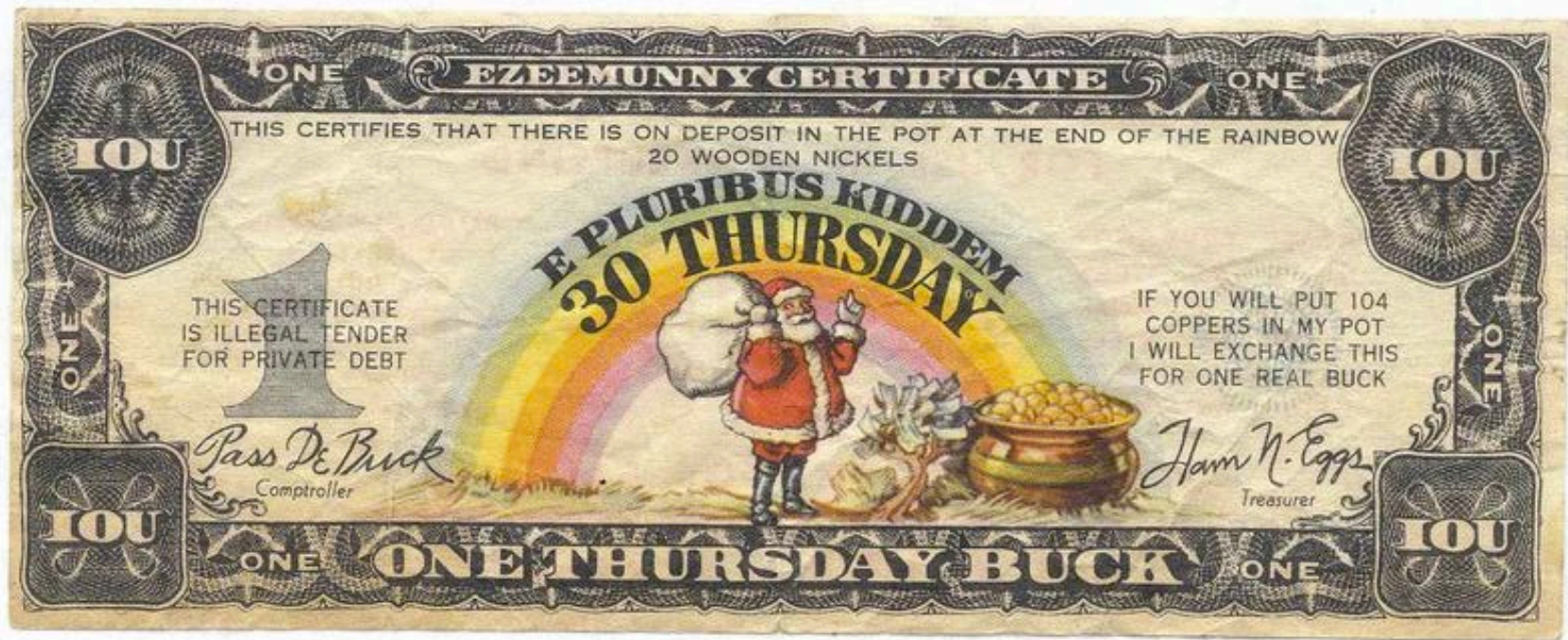
★ ★
National Campaign Committee
4551 N. HIGHLAND AVE., HOLLYWOOD, CAL.

LOS ANGELES SATURDAY, NOVEMBER 11, 1939 SAN FR

Detailed description: This is a vintage poster for the National Ham and Eggs Retirement Association. The background is a light tan color. At the top, the word 'NATIONAL' is in a simple, bold, sans-serif font. Below it, 'Ham and Eggs' is written in a large, dark, stylized script font. In the center, there is a dark oval containing the text 'LIFE PAYMENTS' at the top, '\$30' in a large font in the middle, 'A WEEK' to the right of the '\$30', and 'for life' in a smaller script font at the bottom. This central oval is flanked by the words 'RETIREMENT' on the left and 'ASSOCIATION' on the right, both in a bold, sans-serif font. Below the oval, there are two small stars. Underneath the stars, the text 'National Campaign Committee' is written in a cursive script. Below that, the address '4551 N. HIGHLAND AVE., HOLLYWOOD, CAL.' is printed in a small, sans-serif font. At the very bottom, there is a horizontal line, and below it, the text 'LOS ANGELES', 'SATURDAY, NOVEMBER 11, 1939', and 'SAN FR' is printed in a sans-serif font.



\$30 Thursdays

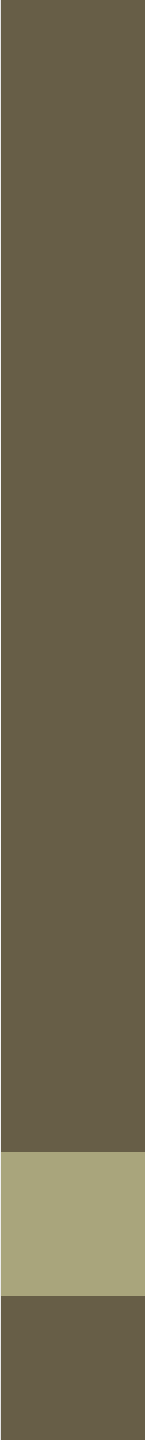


Gov. Olson Often Encountered Friction with the Republican Controlled Legislature



With Ellis E. Patterson, Lieutenant Governor at the State Legislature










The War



Bombardment of Elwood, February 23, 1942

- Navel attack by Japanese submarine of coastal targets near Santa Barbara, CA.
- The event was key in triggering the West Coast invasion scare that influenced the decision to inter Japanese-Americans.
- It was the first shelling of mainland US during World War II.



Franklin Roosevelt's Letter to Governor Olson, May 18, 1942

- I am deeply concerned that the American-born Japanese college students shall be impressed with the ability of the American people to distinguish between enemy aliens and staunch supporters of the American system who happen to have Japanese ancestry.
- To the Honorable Governor Culbert Olson

John Dewitt, instrumental in Executive Order 9066,
directing the internment of Japanese Americans



Olson's Special Contribution to the War Effort from the Governor's Mansion



Hollywood



Governor Olson with Bing Crosby, Bob Hope, and Babe Ruth



With movie star Mae West



With Rose Queen Mary Stanton, Pasadena Freeway



The Pasadena Freeway, 1940



At the opening of the Cahuenga Pass Freeway with Mayor Bowron & Gene Autry



Will Rogers



A gift, on one condition...



Stable at Will Rogers State Park



TIMES PAST

Will Rogers State Beach Dedicated

Los Angeles Times



YEARS

July 26, 1942: California Gov. Culbert Olson and Los Angeles Mayor Fletcher Bowron were among the officials on hand for the formal dedication of Will Rogers State Beach Park, The Times reported.

“Every part of America would be happy to join us in honoring the memory of the great American citizen for whom this new state park has been named, Will Rogers, who stood so high in the hearts of all liberty-loving people,” Olson said.

The beach included 6,300 feet of coastline, including 1,800 feet from the estate of Rogers, who died in a 1935 plane crash.



WILL ROGERS' HOME
1928-1935
GIFT DECEDED TO STATE
1944

With Vice President Henry A. Wallace in Los Angeles, 1942







At home with family in Los Angeles



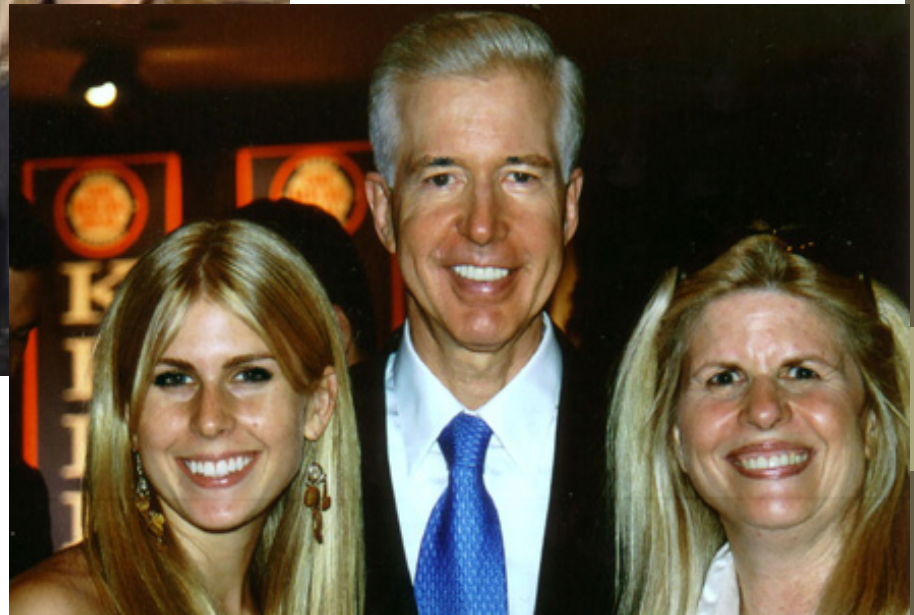
The Olson Legacy

California Granddaughters





Governor Gray Davis, First Lady Sharon, Chrysta & Kaitlyn



With Senator Elizabeth Warren, Actress Ann Weldon, and Senator Boxer



With Senators Barbara Boxer and Elizabeth Warren



Olson's great-granddaughters, Chrysta & Kaitlyn with President Clinton



Hillary with Debra, Kaitlyn & Chrysta



Granddaughter Diane Olson & Robin Tyler, the First Same Sex Couple Married in Beverly Hills, California





DWIGHT D. EISENHOWER
34th President of the United States
1953-1961