

L.A. Aqueduct

Centennial 2013

THE LOS ANGELES AQUEDUCT CENTENNIAL GARDEN

The Garden was commissioned to commemorate the Los Angeles Aqueduct's 100th anniversary and provide a demonstration of the beauty and water-wise benefits of California Friendly® landscaping. The space also improves and refreshes the area surrounding the recently-renovated Mulholland Memorial Fountain.

As you enjoy the garden, look out for these exciting, new features that highlight the historic significance of Mulholland's engineering achievement:



The Decomposed Granite Path that mimics the Los Angeles Aqueduct Alignment

Traverse the 233-mile stretch of the Los Angeles Aqueduct from Mono Lake to the City of Los Angeles without leaving this garden. Walk along the decomposed granite path that runs parallel to an interpretation of the actual course of the aqueduct, and get a feel for the distance that water travels before it reaches our city. Along the way, learn about the structures that Mulholland and his team engineered to keep the water flowing.



A Vintage Piece of the Original L.A. Aqueduct Pipe

Step through the 8-foot diameter riveted steel section of the original Aqueduct pipe, and see up close a slice of L.A.'s profound water history.

A Commemorative Compass with Mulholland's Famous Words

Mulholland uttered these words at the Cascades when water first flowed from the Eastern Sierras to the City of Los Angeles back in 1913. These words are engraved on a commemorative compass placed next to the depicted Cascades on the DG path.

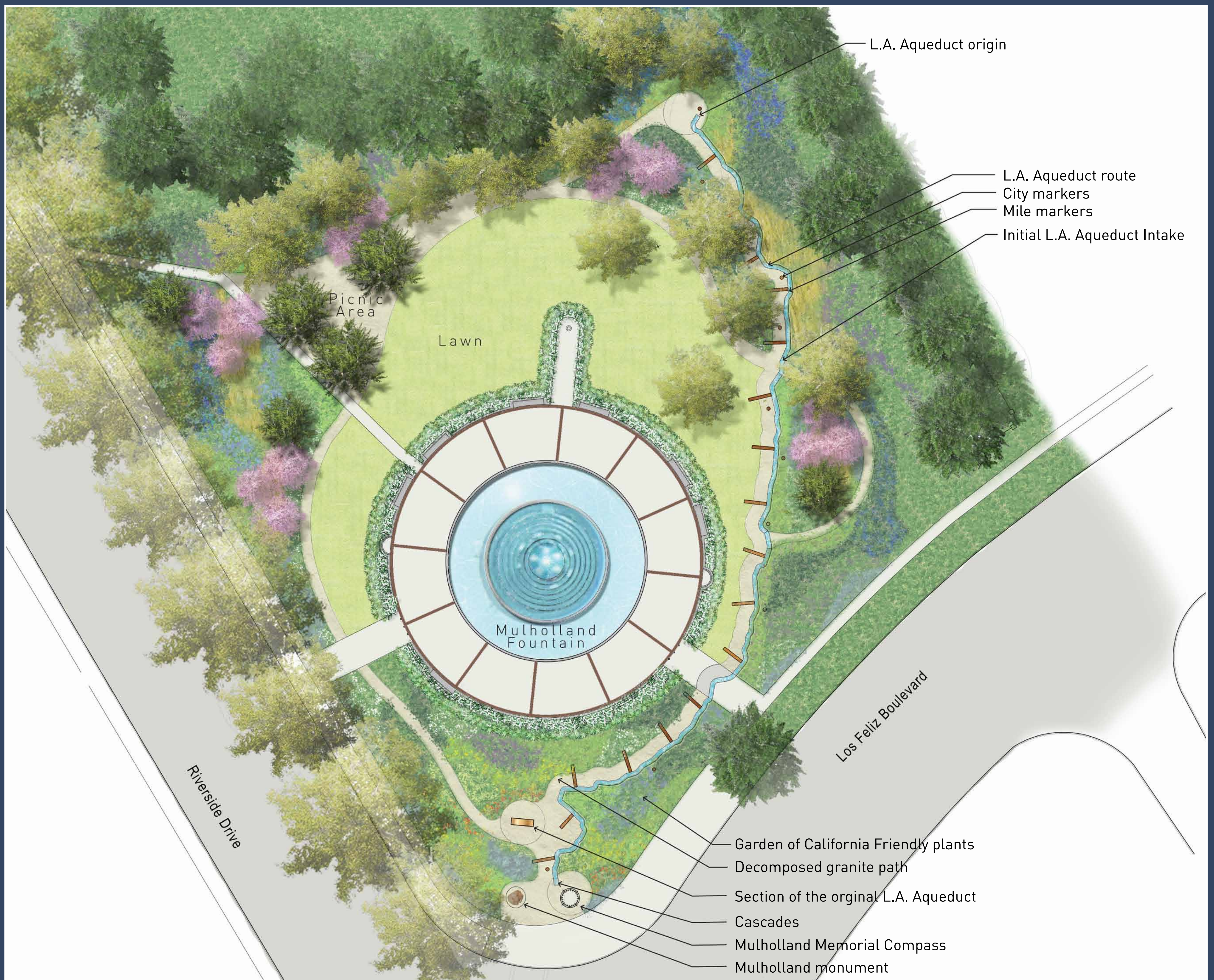


California Friendly® and California Native Plants

Did you know that 40 to 60 percent of drinking water in Los Angeles is used outdoors? LADWP encourages residents and business owners to minimize outdoor water use by planting bushes, trees, groundcover and other types of greenery that are fit for the dry, California weather. The Los Angeles Aqueduct Centennial Garden is a showpiece of the low maintenance but beautiful and water-wise landscape elements that LADWP encourages customers to consider installing in their own yards.

L.A. Aqueduct

Centennial 2013



L.A. Aqueduct

Centennial 2013



Blue Fingers



California Native Sedge



Midnight Blue Penstemon



Red Margin Agave



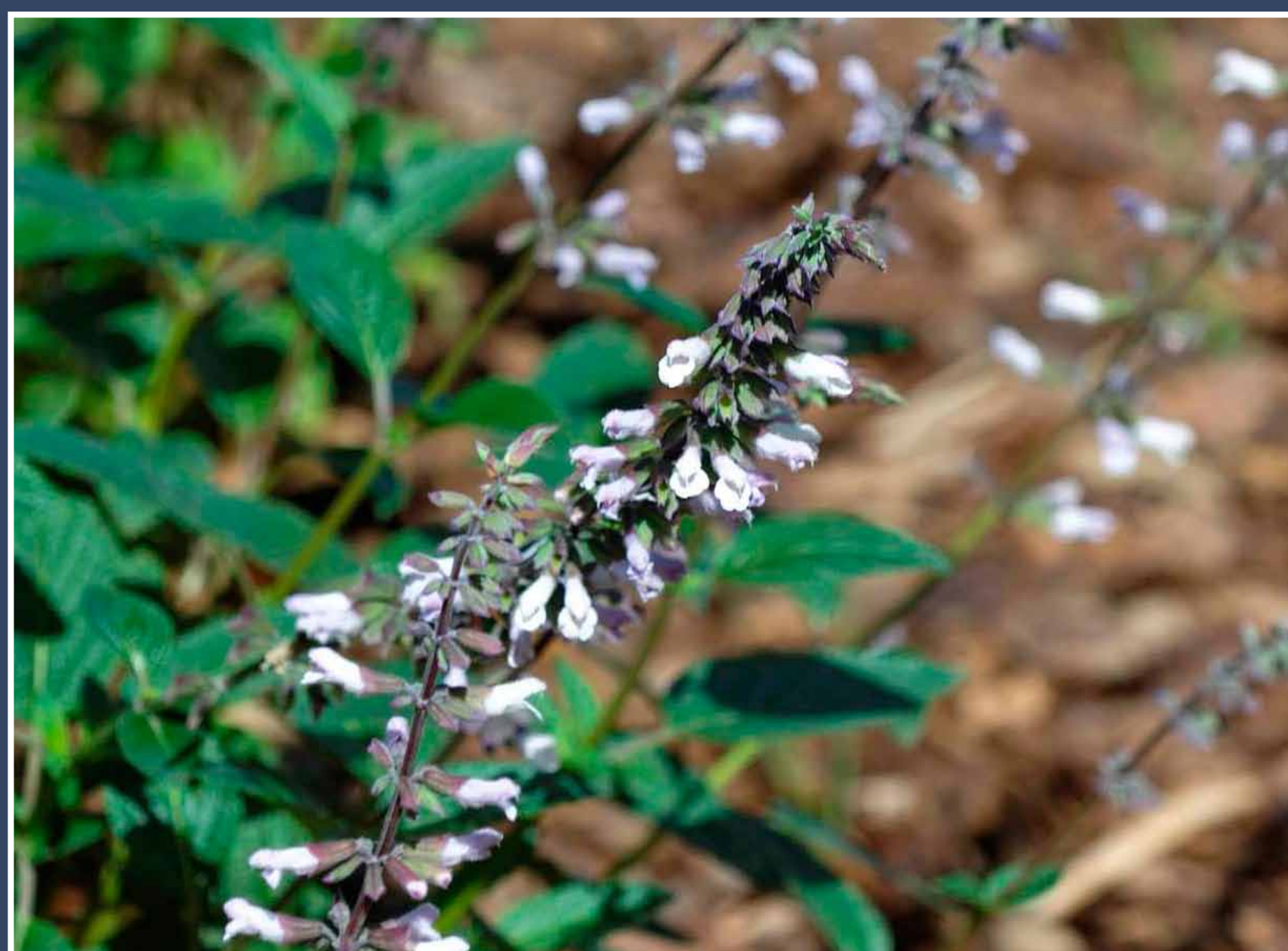
Red Yucca



Torch Lily



Trailing Lantana



Waverly Sage



Yankee Point Ceanothus